

# The most advanced display hardware in the market... period!

Futureproof and lightweight modular architecture laser cut down to the millimeter.

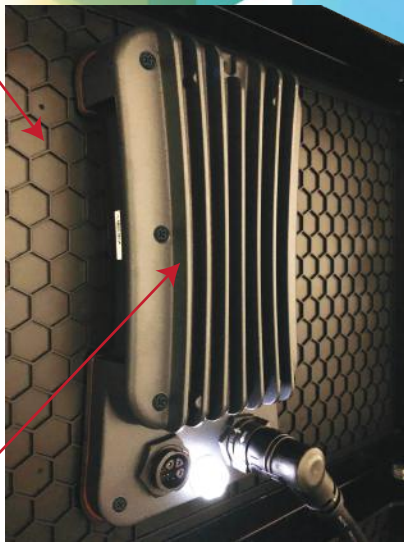


Edge to Edge viewing area



Each individual mod is IP67 rated for the toughest environments

Honeycombed structure that reduces contraction and expansion in different environmental conditions.



Every mod has advanced software embedded on a chip with a high speed micro processor



Advanced and almost unbreakable stepped louver design that displaces light and provides better contrast

The most advanced controller in the market with auto-mapping capabilities, automated diagnostic notifications, cellular/Wifi and power cycling on board.



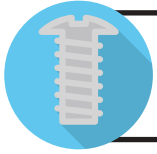
CIRRUS  
SYSTEMS, INC.

CIRRUS SYSTEMS, INC.  
47 Spring Hill Rd.  
Saco, Maine 04072

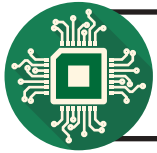
877 636 2331 / P  
info@cirrusled.com / E  
cirrusled.com / W



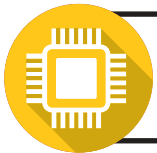
2 stage solder paste manufacturing inspection down to the micron which will provide unmatched led reliability



128 precision robot driven screws put into the facing of every 1x2 foot module for rock solid durability



Advanced PCB, and component engineering, including our proprietary control system developed at Cirrus HQ in Saco, ME



Every mod has a high speed micro processor with a very low latency that delivers a high frame rate image with 281 trillion colors



Not a single wire with our solid state technology. We have developed a proprietary direct interface module with no moving parts



**CIRRUS**  
SYSTEMS, INC.

CIRRUS SYSTEMS, INC.  
47 Spring Hill Rd.  
Saco, Maine 04072

877 636 2331 / P  
info@cirrusled.com / E  
cirrusled.com / W