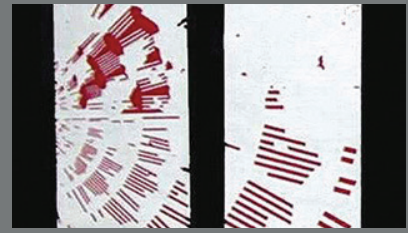


# SEFAR® PET 1500



Tape test with SEFAR® PET 1500

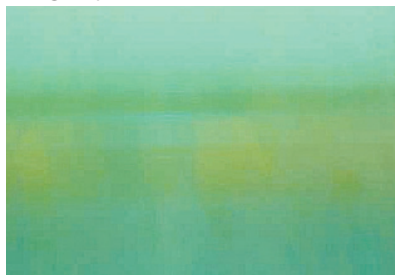


Tape test with untreated high-modulus mesh

SEFAR® PET 1500 is an enhanced adaptation of the industry-leading SEFAR® PET 1000, low elongation polyester mesh. SEFAR® PET 1500 has an innovative surface treatment that provides optimal wettability and a more stencil-friendly surface that increases emulsion adhesion. SEFAR® PET 1500 is setting the new standard for screen printing mesh.

As an enhanced mesh product, SEFAR® PET 1500 shares the same, well-known characteristics of all Sefar fabrics:

- High tension
- Minimal relaxation
- Excellent dimensional stability
- Tight production tolerances



SEFAR® PET 1500: uniform wetting

With the additional, innovative surface treatment, SEFAR® PET 1500 also provides features that set it apart from competitor polyester fabrics:

- In most applications, SEFAR® PET 1500 does not require degreasing materials or wetting agents to achieve optimal emulsion or film adhesion (see example right). Sefar does recommend that users simply rinse the mesh with high pressure water before use.



Untreated high-modulus fabric: nonuniform wetting

- The surface treatment also enhances and improves adhesion of the stencil material—resulting in better stencils that continue to perform during extended print runs. The photo results of a standard stencil-adhesion tape test (photos below) demonstrate the benefits of the SEFAR® PET 1500 surface treatment.
- In addition, SEFAR® PET 1500 has proved itself in extensive field tests in the graphics industry, in particular when printing with UV inks onto flat glass. The tests revealed that there is improved ink-release and a more uniform ink surface when using SEFAR® PET 1500—which is critical when light transmission and opacity are crucial parameters of the artwork.